



SSL GOLD CUP EUROPE QUALIFYING SERIES 2026



SAILING INSTRUCTIONS

SSL Gold Cup Europe Qualifying Series 2026

Round 1: June 7 – 11, 2026

Round 2: July 13 – 17, 2026

Grandson, Switzerland

1 RULES

- 1.1 Rules of the event are those listed in NOR section 1, in addition to the following:
 - 1.1.1 World Sailing RRS Appendix UF, *Umpired Fleet Racing, SSL Gold Cup 2026 Edition* (to be posted to the ONB no later than May 14, 2026) will apply and takes precedence over any conflicting instructions.
 - 1.1.2 RRS Race Signals signal AP is changed to read “when displayed ashore, replace 1 minute by 60 minutes”.
 - 1.1.3 In RRS 44.2, insert after the first sentence; “However, if Mark 1a is set, a boat may delay taking a penalty for an incident in the zone around Mark 1, or on the leg between Mark 1 and Mark 1a, until she has passed Mark 1a.

2 [DP] [NP] ADDITIONAL IDENTIFICATION

- 2.1 The official team uniform provided by the Organising Authority (“OA”) as stated in NOR 2.2 shall be worn outside other clothing whilst racing. Competitors are responsible for ensuring that their uniform, no part of which shall be cut or torn, remains presentable.

3 [DP] [NP] CAMERAS AND ELECTRONIC EQUIPMENT

- 3.1 Competitors may be required to carry cameras, sound equipment and/or positioning equipment as specified by the OA. Information from any such equipment shall not be used by a boat in a hearing. This changes RRS 63.5(a).
- 3.2 Personal cameras and their attachments may be carried if they do not affect the function or use of any existing part of the boat or associated equipment. Any footage or recording is to be made available to the OA upon request.
- 3.3 Equipment provided, once placed on the boat as instructed by the OA, shall not be manipulated by a competitor or support person in any way, except when so required by the OA.

4 COMMUNICATION WITH COMPETITORS

- 4.1 Notices to competitors will be posted on the [Official Notice Board](https://onb.sslgoldcup.com) online (“ONB”), located at: onb.sslgoldcup.com.

5 [DP] CODE OF CONDUCT

- 5.1 Competitors and support persons shall comply with reasonable requests from race officials.
- 5.2 Competitors and support persons shall handle any equipment or advertising provided by the OA with care, seamanship, in accordance with any instructions for its use and without interfering with its functionality.

6 CHANGES TO SAILING INSTRUCTIONS

- 6.1 Any change to the Sailing Instructions is subject to the approval of the Principal Race Officer or Regatta Director and will be posted no later than two (2) hours before the warning signal

of the race on the day it will take effect, except that any change to the schedule of races will be posted by 2000 on the day before it will take effect.

7 SIGNALS MADE ASHORE

- 7.1 The display of signals made ashore will be from the flag pole situated at the SSL Headquarters.

8 FORMAT AND SCHEDULE

- 8.1 Subject to the approval of the Principal Race Officer or the Regatta Director the format or schedule of may be changed at any time if it is deemed necessary to protect the continuity of the Event.
- 8.2 The schedule is as follows:

First day	0900 – 1700	Registration & Weighing
Second to fifth day	0930 1100 As soon as practicable after the last race	Skipper's meeting First warning signal Podium Ceremony

- 8.3 Six (6) races are scheduled for each Group over four (4) racing days.
- 8.4 The warning signal for each succeeding race will be made as soon as practicable after the finish of the previous race.
- 8.5 To alert competitors that a race will begin soon, the orange starting line flag(s) will be displayed (with one sound) for at least five (5) minutes before the warning signal is made.
- 8.6 On the last scheduled day of racing, no warning signal will be made after 1600.
- 8.7 An updated schedule of the next day's races will be posted by the race committee no later than 2000 the day before.

9 CLASS FLAG

- 9.1 The Class Flag will be the five pointed SSL Gold logo on a black background.

10 RACING AREA

- 10.1 Addendum A shows the approximate racing area. The racing area may be physically limited by the use of buoys or marshals. If applicable, a notice with details of such limitations will be posted no later than 2000 the day before the first day of races.
- 10.2 The racing area is defined as an area extending 100 meters beyond the entire course in which a competitor would normally sail while racing.
- 10.3 [DP][NP] Addendum B shows restricted areas on the lake where navigation is forbidden. The areas filled in white are bordered by white buoys. The area filled in yellow is marked by yellow buoys.

11 COURSES

- 11.1 Addendum C shows the courses, including the course signals, approx. angles between legs, the order in which marks are to be passed and the side on which each mark is to be left.
- 11.2 If a gate is either set or replaced by a single mark, it shall be left to port.
- 11.3 No later than the warning signal, the race committee signal vessel will display the course to be sailed and the compass bearing for mark 1.

12 MARKS

- 12.1 Marks 1, 1a, 4s and 4p will be a yellow inflatable pyramid.
- 12.2 Change of course marks will be a pink inflatable pyramid.
- 12.3 Starting and finishing marks will either be a race committee vessel on station or a white and black chequered cylinder.

13 THE START

- 13.1 Races will be started as follows:

Minutes before the start signal	Visual signal	Sound signal	Meaning
5	Class flag displayed	One	Warning signal
4	P or black flag displayed	One	Preparatory signal
1	Preparatory flag removed	One long	One minute
0	Class flag removed	One	Starting signal

This modifies RRS 26.

- 13.2 The starting line will be between the staff displaying an orange flag on the race committee signal boat at the starboard end and either:
 - 13.2.1 the course side of the port-end starting mark, or
 - 13.2.2 a staff displaying an orange flag on a race committee vessel at the port end.
- 13.3 A boat starting later than four (4) minutes after her starting signal will be scored Did Not Start (DNS) without a hearing. This changes RRS A5.1 and A5.2.

14 CHANGE OF THE NEXT LEG OF THE COURSE

- 14.1 To change the next leg of the course, the race committee will lay a new mark or move the leeward gate (or move the finishing line) and remove the original mark as soon as practicable. When in a subsequent change a new mark is replaced, it will be replaced by an original mark.
- 14.2 For course LA and LRA, in case of a change of course at mark 1, mark 1a will not be set.

15 SHORTENING COURSE

- 15.1 Courses will not be shortened. This changes RRS 32.

16 THE FINISH

- 16.1 The finishing line will be between the staff displaying a blue flag on the race committee signal boat and either:
- 16.1.1 the course side of a finishing mark at the other end, or
 - 16.1.2 a staff displaying a blue flag on a race committee vessel at the other end.
- 16.2 When the first boat finishes, the race committee will display a black and white chequered flag with one sound signal.

17 PENALTY SYSTEM

- 17.1 Penalties for breaches in rules in the Sailing Instructions marked **[SP]** will be deducting one (1) point for each infringement. The penalty is applied to each race in which the instruction was infringed. If the penalty is related to an infringement while not racing, it will be applied to the closest race, inclusive of the next one to be sailed.

18 TIME LIMITS AND TARGET TIMES

- 18.1 Time limits and target times are in minutes and as follows:

Time Limit	Mark 1 Time Limit	Finish Window	Target Time
90	25	15	40

- 18.2 If no boat has passed Mark 1 within the Mark 1 time limit the race committee will abandon the race.
- 18.3 Competitors failing to finish within the time stated in the Finish Window, after the first competitor sails the course according to RRS 28, will be scored Did Not Finish without a hearing (DNF). This changes RRS 35, A5.1, A5.2 and A10.

19 HEARING REQUESTS

- 19.1 Hearing requests may be submitted online at: onb.ssgoldcup.com. Protests and requests for redress or reopening shall be submitted there as soon as reasonably possible after the incident.
- 19.2 The location for hearings will be advised by notice posted to the ONB.

20 SCORING

- 20.1 In accordance with RRS 90.3(a) combined with A4, each boat *starting* and *finishing* and not thereafter retiring, being penalised or given redress shall be scored points as follows:

FINISHING PLACE	POINTS
First	Equal to the number of teams registered in the applicable Group
Each place thereafter	Deduct one point

For all races on the last day of racing in a particular Group, points scored shall be doubled. Points will not be doubled retroactively in the event that a future scheduled race could not be completed.

- 20.2 A boat that did not start, did not sail the course, did not finish, retired or was disqualified shall be scored zero points.
- 20.3 No race score will be excluded.
- 20.4 A minimum of one (1) race is required to be completed in each Group to constitute a valid Round for that Group.
- 20.5 [NP] [DP] On the last day of racing in any Round, teams shall make a genuine effort to start, sail the course and finish the races. The penalty for breach of this instruction will be ranking the boat or boats last in their Group in the Round. This changes A5.1 and A5.2.
- 20.6 To request correction of an alleged error in posted results, a boat may submit a Scoring Enquiry at: onb.ssgoldcup.com.

21 [\[DP\] SAFETY REGULATIONS](#)

- 21.1 A boat that retires from a race shall notify the race committee as soon as possible.

22 [REPLACEMENT OF CREW](#)

- 22.1 [NP] [SP] For the purposes of TSR 3(h), the Daily Crew List declaration shall be made online on the Enquiries & Declarations page at: onb.ssgoldcup.com. The captain of a team, or their authorised representative under TSR 3(f), shall submit the completed list as follows:
 - 22.1.1 For the first scheduled day of racing, by no later than 0830 on that day.
 - 22.1.2 For all other racing days, by no later than 2100 on the day before it will be in effect. Changes may be made by posting no more that one subsequent declaration at any time up until 0830 on the day to which it applies.

Whilst racing, all crew in the most recently made valid declaration must be on board.

- 22.2 [DP] Substitution of competitors is not allowed without written approval of the race committee or Regatta Director. Requests for substitution shall be in writing and shall be made to the race committee or Regatta Director at the first reasonable opportunity, which may be after the race.

23 [\[DP\] EQUIPMENT AND MEASUREMENT CHECKS](#)

- 23.1 A boat may be instructed by the technical committee, either ashore or on the water, to proceed immediately to the Inspection Area for inspection.
- 23.2 Until permission is given by the technical committee, a competitor once instructed to proceed for inspection, shall have no unauthorised contact with any support personnel, no

person shall join or leave the boat, no equipment or other item shall be taken on or off that boat and the boat shall not leave the Inspection Area.

24 SUPPLIED BOATS AND EQUIPMENT

- 24.1 Boats will be supplied by the OA.
- 24.2 Failure of boats or equipment supplied by the OA will not be grounds for redress. This changes RRS 61.1(a).

25 LOCATIONS OF IMPORTANCE

- 25.1 Locations of importance are listed in Addendum D.

26 OFFICIAL VESSELS

- 26.1 Official vessels will be identified as follows:

Vessel	Flag
International Jury	White flag with "J" in black
Race committee	Blue or-Yellow flag with white "RC" and red anchor in black
Support/Repair Boats	SSL Gold Cup flag
TV	Green with "TV" in black
Press/Photography	Green with "P" in black

- 26.2 Actions by official vessels, drones or helicopters shall not be grounds for redress by a competitor. This changes RRS 61.1(a).

27 [DP] SUPPORT PERSONS

- 27.1 Support persons shall comply with the Support Team Regulations.
- 27.2 **[NP]** Support persons will be allowed on the water only aboard support vessels, if any, provided by and managed by the OA. No personal support vessel will be permitted on the water.

28 [DP] USE OF OFFICIAL VESSELS

- 28.1 Trash may be placed aboard official vessels.
- 28.2 Official vessels shall not be used to carry equipment or any personal item of Team members.

29 [DP] BERTHING

- 29.1 Boats shall be kept in their assigned places while at the dock.

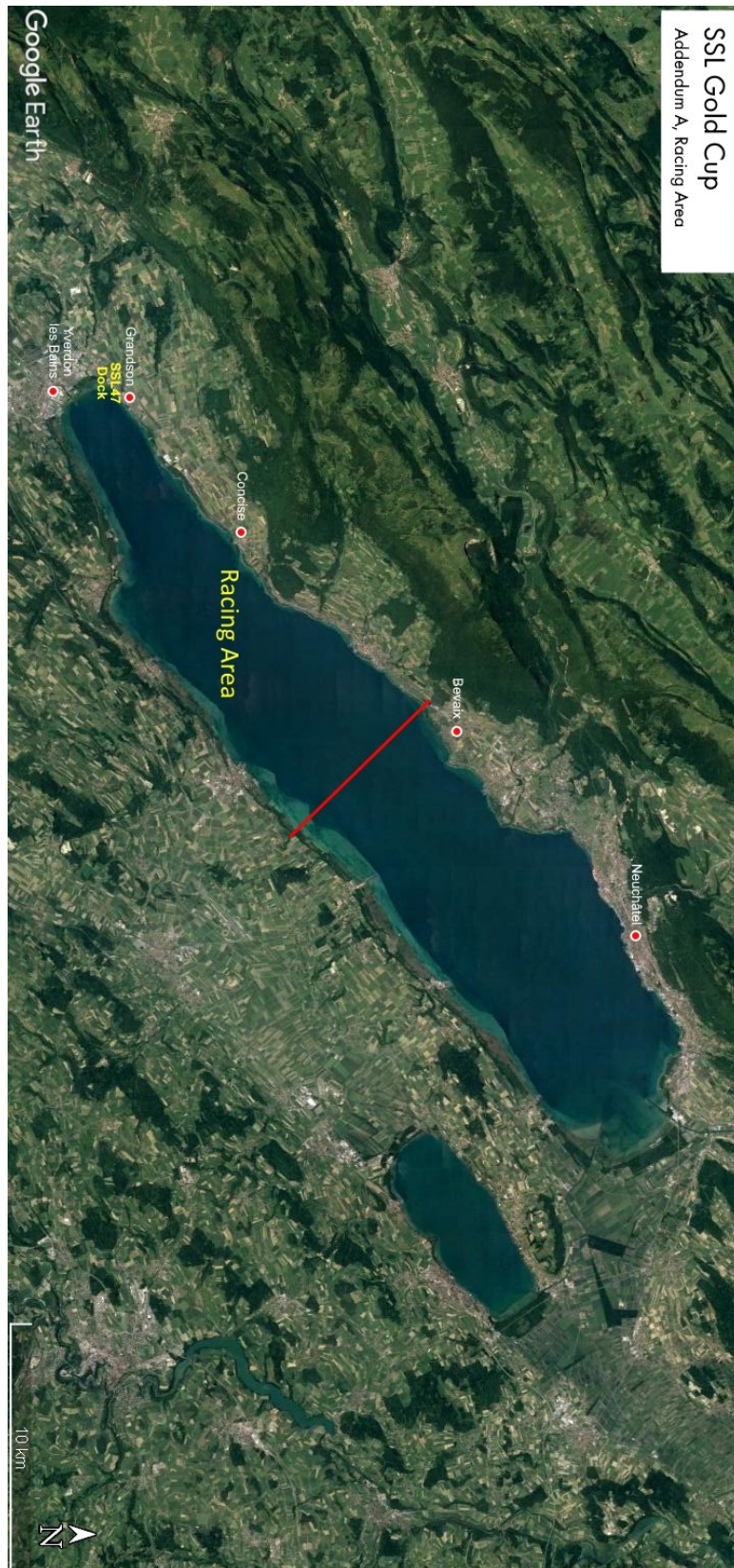
30 [DP] DIVING EQUIPMENT AND PLASTIC POOLS

- 30.1 Underwater breathing apparatus and plastic pools or their equivalent shall not be used around boats at any time from 0800 on the first day of racing and the end of the last race of the Event.

31 RISK STATEMENT

- 31.1 Rule 3 of the RRS states: "The responsibility for a boat's decision to participate in a race or to continue racing is hers alone". Sailing is by its nature an unpredictable sport and therefore inherently involves an element of risk. By taking part in the Event, each competitor agrees and acknowledges that:
- 31.1.1 they are aware of the inherent element of risk involved in the sport and accept responsibility for the exposure of themselves, their crew and their boat to such inherent risk whilst taking part in the Event;
 - 31.1.2 they are responsible for the safety of themselves, their crew, their boat and their other property whether afloat or ashore;
 - 31.1.3 they accept responsibility for any injury, damage or loss to the extent caused by their own actions or omissions;
 - 31.1.4 by participating in any race they are satisfied that the boat is in good order, equipped to sail in the Event and that they are fit to participate;
 - 31.1.5 they do not have any medical conditions or impairments that would affect their ability to safely take part in the Event;
 - 31.1.6 they will not participate in the Event if under the undue influence of alcohol, drugs or otherwise unfit to participate;
 - 31.1.7 the provision of a race management team, patrol boats and other officials and volunteers by the race organiser does not relieve them of their own responsibilities;
 - 31.1.8 the provision of patrol boat cover is limited to such assistance, particularly in extreme weather conditions, as can be practically provided in the circumstances;
 - 31.1.9 it is their responsibility to familiarise themselves with any risk specific to the venue or the Event drawn to their attention in any rules and information produced for the venue or the Event and to attend any safety briefing held for the Event.

ADDENDUM A – RACING AREA



ADDENDUM B – FORBIDDEN AREA FOR NAVIGATION



ADDENDUM C – COURSES

L

Course: Windward / Leeward

Signal	Mark Rounding Order
L2	Start - 1 - 4s/4p - 1 - Finish
L3	Start - 1 - 4s/4p - 1 - 4s/4p - 1 - Finish
L4	Start - 1 - 4s/4p - 1 - 4s/4p - 1 - 4s/4p - 1 - Finish

LR

Course: Windward / Leeward

Signal	Mark Rounding Order
LR2	Start - 1 - 4s/4p - 1 - 4p - Finish
LR3	Start - 1 - 4s/4p - 1 - 4s/4p - 1 - 4p - Finish
LR4	Start - 1 - 4s/4p - 1 - 4s/4p - 1 - 4s/4p - 1 - 4p - Finish

LA

Course: Same As Course L Except with Offset Mark 1a

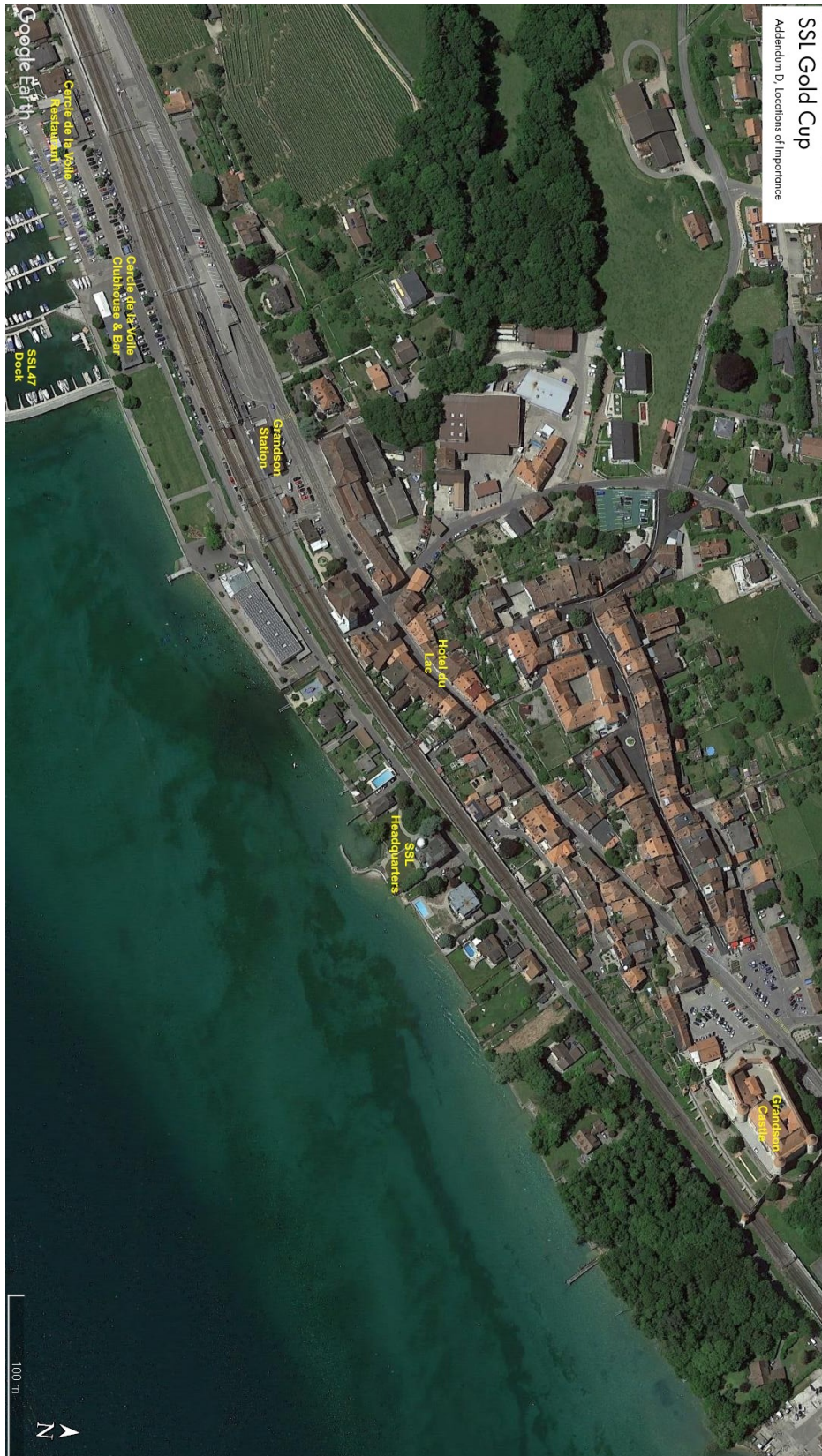
Signal	Mark Rounding Order
LA2	Start - 1 - 1a - 4s/4p - 1 - 1a - Finish
LA3	Start - 1 - 1a - 4s/4p - 1 - 1a - 4s/4p - 1 - 1a - Finish
LA4	Start - 1 - 1a - 4s/4p - 1 - 1a - 4s/4p - 1 - 1a - 4s/4p - 1 - 1a - Finish

LRA

Course: Same as LR Except With Offset Mark 1a

Signal	Mark Rounding Order
LRA2	Start - 1 - 1a - 4s/4p - 1 - 1a - 4p - Finish
LRA3	Start - 1 - 1a - 4s/4p - 1 - 1a - 4s/4p - 1 - 1a - 4p - Finish
LRA4	Start - 1 - 1a - 4s/4p - 1 - 1a - 4s/4p - 1 - 1a - 4s/4p - 1 - 1a - 4p - Finish

ADDENDUM D – LOCATIONS OF IMPORTANCE



1. The Race Office is located on the ground floor of the SSL Headquarters.
2. Meetings of the International Jury will be held in the meeting room of the Hotel du Lac, Grandson.
3. Reusable water bottles may be filled at the SSL Headquarters.
4. The SSL47 dock is located in the marina by the Cercle de la Voile de Grandson.
5. Skippers' meetings will be held in the tent at the SSL Headquarters.
6. The podium ceremony will be held outside in the garden area of the SSL Headquarters.